

Carleton Park J & I Weekly Newsletter

Weekending Friday 19th June 2020

Dear Parents/Carers,

I hope this week has been a safe and productive week for you all and that you have seen a noticeable improvement in your child's attitude to home learning because of the improvements made. We continue to listen to your feedback, adapting and improving where possible. Next week, as detailed below, introduces the live feedback sessions which I hope support you further with the home learning sessions.

I hope that our school community remain safe and well and find some comfort in this newsletter and further communications we have offered. As always, you know where we are if for any reason you wish to make contact – either via the school phone: 01977 722615 or admin email: admin@carletonpark.patrust.org.uk

Thank you,
Mr J Ayre

Parent Feedback

As ever, it is wonderful to hear your positive feedback and recognition of the efforts the school are going to in order to provide a safe and educational experience for our children. Please see a further thank you that arrived in the admin inbox this week – thank you!



"You are all doing an amazing job and have been throughout. The communication from school has been 'spot on'. The way that you are adapting to use different methods and technology for the kids at home too is amazing.

Well done team Carleton Park J&I 😊

"We have been really impressed and reassured by the reintroduction the children have had to school. It was a very difficult judgement call, as a parent, to decide whether sending them back to school was in their best interests, however after the first day I really felt that we had made the right decision. The children have quickly adapted to the changes (as children do), and have enjoyed seeing their teachers and friends. The balance of activities has been just right to re-engage them with some learning, whilst also managing the social and emotional needs they have around another period of change and transition.

After his first day back, ***** announced that he had had 'the best day in school that I've ever had', which is probably the highest praise you could get. **Thanks again**"

Home Learning Package

We have seen a fantastic response this week with our children's engagement with the home learning package. The intention was to provide greater structure and responsibility for home learning to take place and this has been enormously successful. We have received some lovely feedback from parents/carers who have spoken proudly about a shift in the children's attitudes when completing home learning tasks now and that they are very excited by the thought of 'live feedback sessions' next week.

The timings on the document have been removed to avoid confusion that the tasks have to be completed at a set time because they don't and have been replaced by the length of time we expect them to take.

The learning packs will be available to download from ClassDojo and our school website:
<https://carletonpark.patrust.org.uk>

DO YOUR BEST

This is our unwavering message to all parents/carers during this time.

Some useful tips when supporting learning from home:

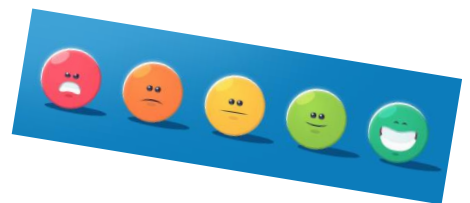
- On an evening, plan with your child what work you are going to complete the next day so they know what to expect.
- Create your own timetable – let the work fit around your routine.
- Stay positive, have fun and laugh together – the work isn't a test/no one will judge how well you've done – enjoy the time working together.
- Make sure you take breaks – enjoy the fresh air and drink plenty of water.

If you are unsure on anything, email school or just google it. Do not worry about things being wrong – school will pick this up once we are back

If you have any issues with downloading the home learning packs, please contact us via the school admin email: admin@carletonpark.patrust.org.uk.

Live Feedback Sessions

Next week sees the launch of our new live sessions with teachers and classmates. We are all really excited to catch up with our pupils and have the opportunity to see their faces again, even if it is virtually. Our live sessions will be the children's opportunity to share their learning as well as being able to ask questions about anything they're unsure of.



Please support your child with sending any questions to their class Padlet page before 12pm so their teacher can prepare for the session.

*Unfortunately the sessions will not be recorded.

Pre - Teach Videos



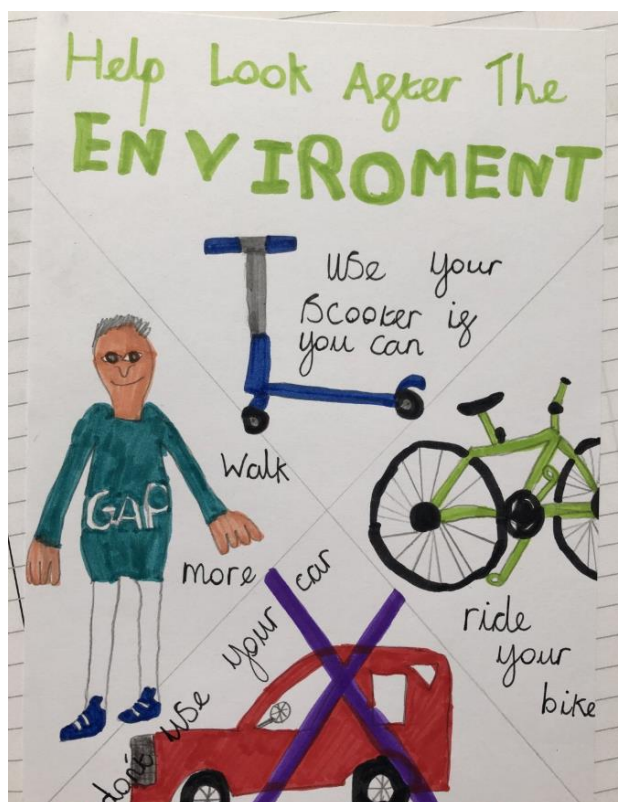
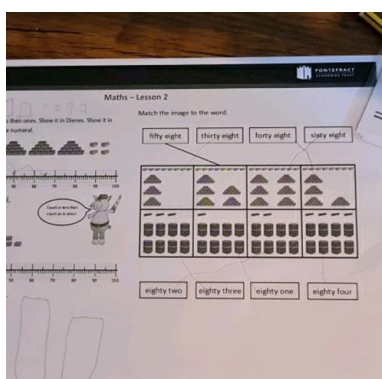
Another exciting addition to our home learning offer for pupils are our very own pre-teach videos! A team of teachers across the Pontefract Academies Trust have been working hard preparing a Maths and English video (accessed via YouTube) for each year group. The videos will support your children with their home learning for the week. The links for both the videos and live sessions will be shared via the home learning schedules for each year group, we really hope to see as many of our pupils as possible accessing this provision.

ClassDojo

It has been lovely to see the children's work through ClassDojo this week, it is a fantastic platform to keep in touch with our parents and pupils remotely and we hope you have found it useful. Sharing your child's home learning through their portfolio is a brilliant way to continue to see their progress and receive feedback. Next week, the home learning schedule will have the Dojo logo next to pieces of work your child's teacher would like them to upload if they're not in school so keep your eye out for these!



Here are some of the images we received this week:

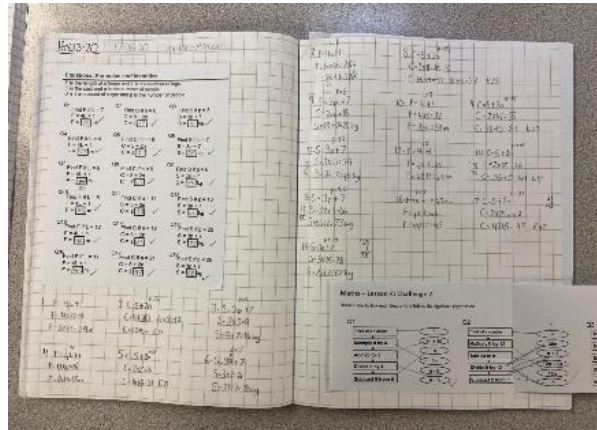


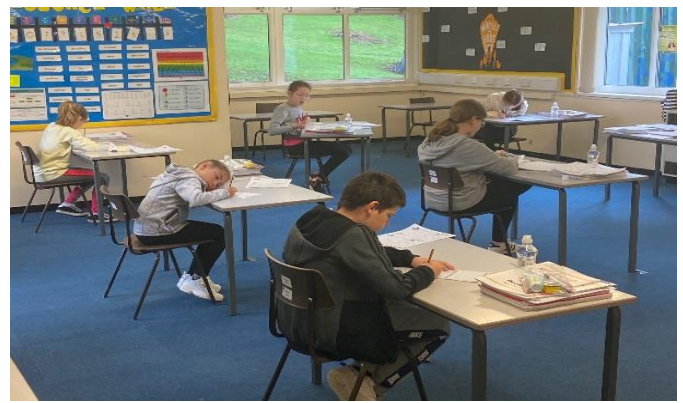
****If you have not yet connected with your child's ClassDojo page please do so as soon as possible. It is a great way to show off your home learning activities.***

School Re-opening #Week3

As we come to the end of the third week, we continue to remain extremely proud of our children in school. For many stepping back through the school gates - though they may be excited - is a daunting feat after so long at home. I, as both a Headteacher and a parent, truly appreciate this and would like to take the opportunity to reassure you our team of staff will continue to do all we can to ensure this transition is as seamless and enjoyable for our children as possible.

I really hope you see the following images as reassurance if you are still deliberating over the decision to return your child to school and again, you know where we are if you wish to talk through your eligibility of a place or just questions you would like answering.





A big thank you to the parents and carers who have continued to adhere to all the new procedures and our one-way system - it is working really well and the marshals are always on hand to show you where to go if you are unsure.

Staying safe online and at home...

Safety Card: TikTok



Formally known as Musical.ly & Live.ly, TikTok is a free social media platform used to create and share short videos. TikTok rules require the user to be 13 or older to use it and with parental consent if you're under 18. Users are able to create videos of themselves lip-syncing that can last up to 60 seconds. You are able to watch other user's streams & videos, you may be exposed to inappropriate content.

Stay safe on TikTok using the instructions on their Digital Wellbeing section, blocking & reporting below.



Digital Wellbeing

Set up Restricted Mode, Screen Time Management & Family Safety Mode on your TikTok app.

- Tap on in the bottom right corner of the app.
- Tap on & then select **Privacy & Safety**.
- Scroll down and tap on **Digital Wellbeing**.



Block

Block a user using these simple instructions;

- Go to the user you wish to report.
- Tap on
- Tap on **Block** and then **confirm**.

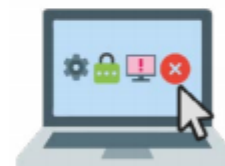


Report

Report a user using these simple instructions;

- Go to the user you wish to report.
- Tap on
- Tap on **Report**.
- Then select why you are reporting.
- Select the part of the users profile you want to report, provide some detail and click **submit**.

For more apps visit;
oursafetycentre.com



For more information and some fantastic resources, please click [here](#).

Drop off and Pick up information

I cannot thank you enough for your compliance and efforts in following our drop off and pick up system. I would like to take the opportunity however to further clarify the timings for each group below:

Key Workers and Vulnerable Children:

Drop off - the main entrance is open between 8:30 and 9:00am.

Pick up – gates open between 15:00 – 15:15 for parents to enter the one-way system for collecting.

If a child is walking home alone, we will release them at 15:15.

Reception (non-key worker/vulnerable):

Drop off – the gates open between 9:15 and 9:30am.

Pick up – gates open between 14:15 and 14:30 for parents to enter the one-way system for collecting.

Year 1 (non-key worker/vulnerable):

Drop off – the gates open between 8:45 and 9:00am.

Pick up – gates open between 13:45 and 14:00 for parents to enter the one-way system for collecting.

Year 6 (non-key worker/vulnerable):

Drop off – the gates open between 9:45 and 10:00am.

Pick up – gates open between 14:45 and 15:00 for parents to enter the one-way system for collecting.

As previously communicated, the reason for the 15-minute drop off and pick up window is to reduce the number of parents and pupils entering and leaving at the same time. I hope the above information further clarifies and supports you during this process.

Need a school place for your child?

As our numbers begin to grow, we are having to mix some year groups and use different staff/classrooms than the children may have been used to. Our main priority is keeping children safe and following the government's strict guidance on social distancing. Social groups unfortunately are not a priority during this time.

The following process applies:

1. Parents/carers contact school to request a child place via the admin email.
2. The admin team will carry out eligibility checks.
3. If eligible and a place is available, you will receive confirmation via the school's admin email account.
4. From receiving your confirmation of a place, admin will follow the Trust policy of 2 working days' notice when providing a start date.